

SUBDIVISION PLAN OF
PART OF LOT 1, SECTION 5, RANGE 4, PLAN 10957, EXCEPT THAT PART OF SAID LOT
SHOWN OUTLINED IN RED ON PLAN 1659-R AND EXCEPT PARTS IN PLANS 15342, 16358,
18893, VIP81664, EPP16402 AND EPP51947; AND PART OF PARCEL B (DD 472441) OF
SECTION 6, RANGE 4, EXCEPT PARTS IN PLANS 4159, 4307, 8219, 9529, 17353,
VIP81664 AND EPP51947; BOTH OF COMICHAN DISTRICT.

PLAN EPP92747

BCGS 928.072



The intended plot size of this plan is 560m in width by
 864m in height (D Size) when plotted at a scale of 1:750.

LEGEND

- All distances are in metres.
- denotes standard capped postfound.
 - denotes standard iron post found.
 - denotes standard iron post placed.
 - denotes GNSS observed traverse hub.
 - denotes combined factor.
 - denotes found, destroyed, replaced.

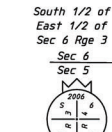
Grid bearings are derived from dual frequency
 differential GNSS observations and are referred to
 the central meridian of UTM Zone 18 (123° West).

To obtain astronomic bearings referred to the meridian
 passing through traverse hub "493" subtract 0° 29' 21".

The UTM coordinates and estimated absolute
 accuracy achieved are derived from dual frequency differential
 GNSS observations to Western Canadian Deformation Array
 Active Control Point Albert Head (S34933) and Nanosec (B16866).

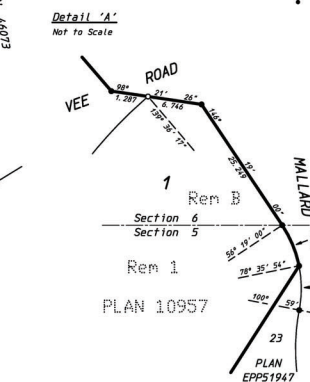
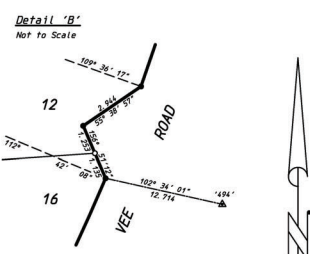
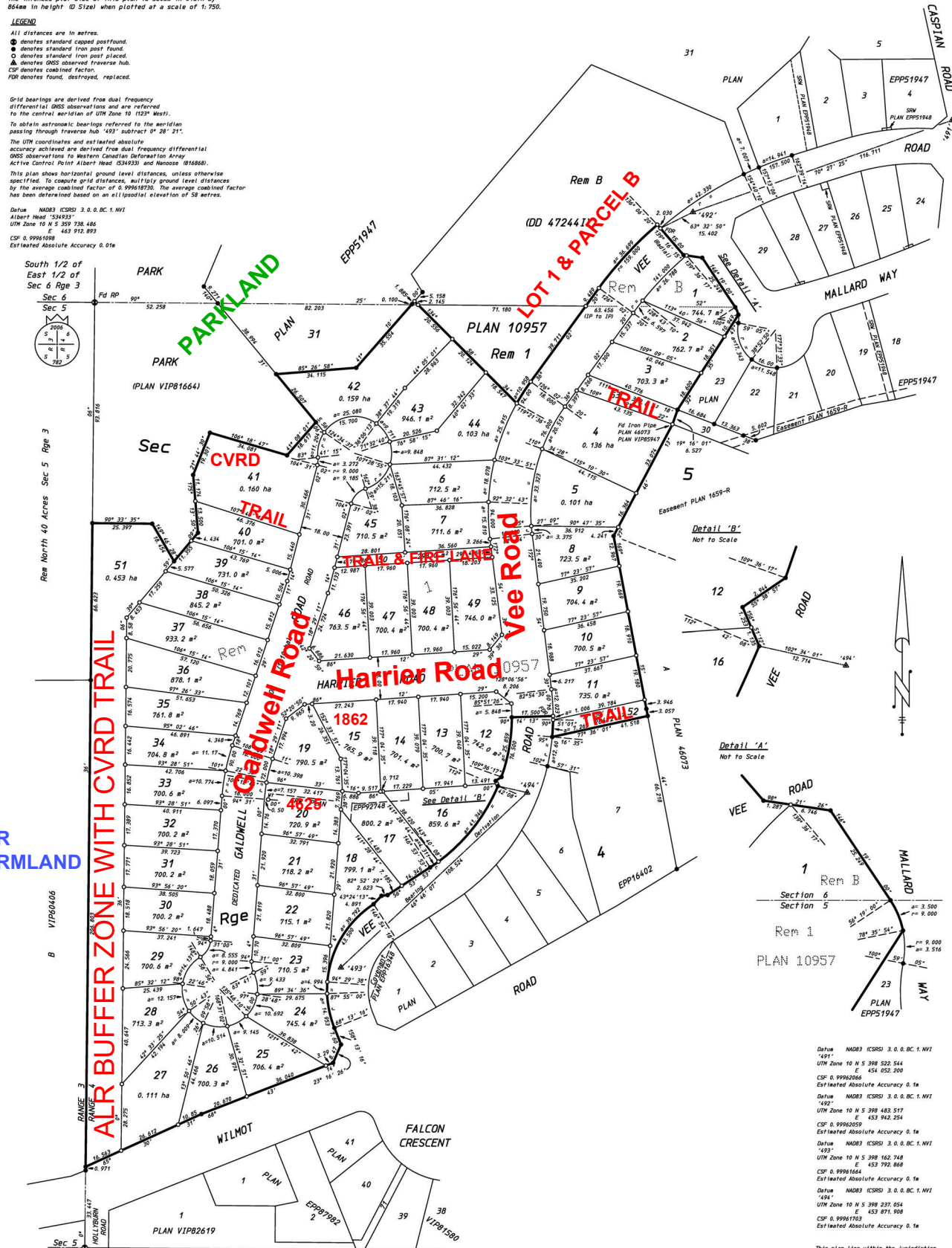
This plan shows horizontal ground level distances, unless otherwise
 specified. To compute grid distances, multiply ground level distances
 by the average combined factor of 0.99616730. The average combined factor
 has been determined based on an ellipsoidal elevation of 58 metres.

Datum NAD83 (CSRS) 3.0 & 0. BC. 1. NV1
 Albert Head "534933"
 UTM Zone 18 W S 399 738.486
 E 463 912.893
 CSF 0.99616730
 Estimated Absolute Accuracy 0.01m



ALR BUFFER ZONE WITH CVRD TRAIL

ALR FARMLAND



Datum NAD83 (CSRS) 3.0 & 0. BC. 1. NV1
 "491"
 UTM Zone 18 W S 398 522.544
 E 454 052.200
 CSF 0.9962066
 Estimated Absolute Accuracy 0.1m

Datum NAD83 (CSRS) 3.0 & 0. BC. 1. NV1
 "492"
 UTM Zone 18 W S 398 483.577
 E 453 992.848
 CSF 0.9962059
 Estimated Absolute Accuracy 0.1m

Datum NAD83 (CSRS) 3.0 & 0. BC. 1. NV1
 "493"
 UTM Zone 18 W S 398 162.748
 E 453 972.868
 CSF 0.9961664
 Estimated Absolute Accuracy 0.1m

Datum NAD83 (CSRS) 3.0 & 0. BC. 1. NV1
 "494"
 UTM Zone 18 W S 398 237.054
 E 453 971.908
 CSF 0.9961703
 Estimated Absolute Accuracy 0.1m



KENTON WILSON
 PROFESSIONAL LAND SURVEYORS
 321 CORONATION AVE.
 DUNCAN, B.C. V9L 2T4 (250) 745-4745
 FILE 18-83744 SUB

Note:
 This plan shows one or more witness posts which are
 not set on the true corners.

This plan lies within the jurisdiction of
 the Approving Officer for Ministry of
 Transportation and Infrastructure.
 Ministry File No. 2014-05242

This Plan lies within
 The Cowichan Valley Regional District.

Inspected under the Land Title Act on
 the 20th day of April, 2022.

The Field survey represented by this plan
 was completed on the 18th day of November 2019.
 Allen L. Cox BCLS # 778